



Development Ordinance Zoning Map 2021

Town Hall

Stallings Elementary School

Atrium Hospital

County Line

Town of Stallings Limits

STALLINGS ZONING DISTRICT

AG

Agriculture

SFR-1

Residential

SFR-2

Residential

SFR-3

Residential

MFT

Multi-Family Transitional

TC

Town Center

CIV

Civic

MU-1

Mixed-Use 1

MU-2

Mixed-Use 2

C-74

US Highway 74 Commercial

CP-485

Interstate Highway 485 Corporate Park

VSR

Vehicle Service and Repair

IND

Industrial

CZ

Conditional Zoning

0 1/4 1/2 1

Mile

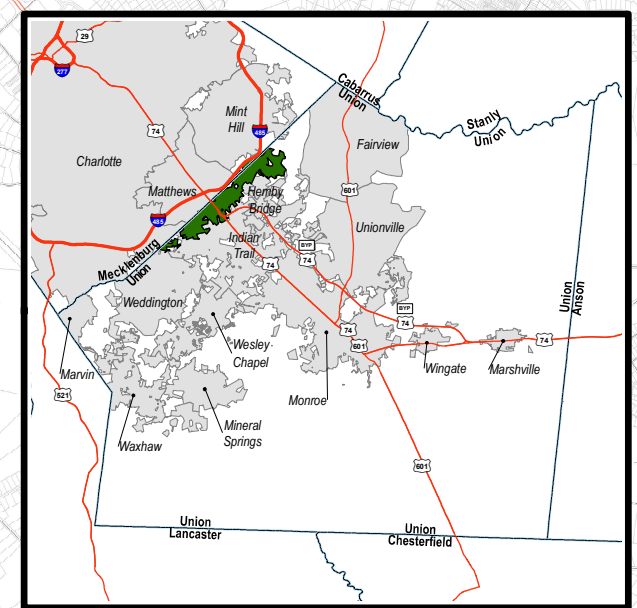
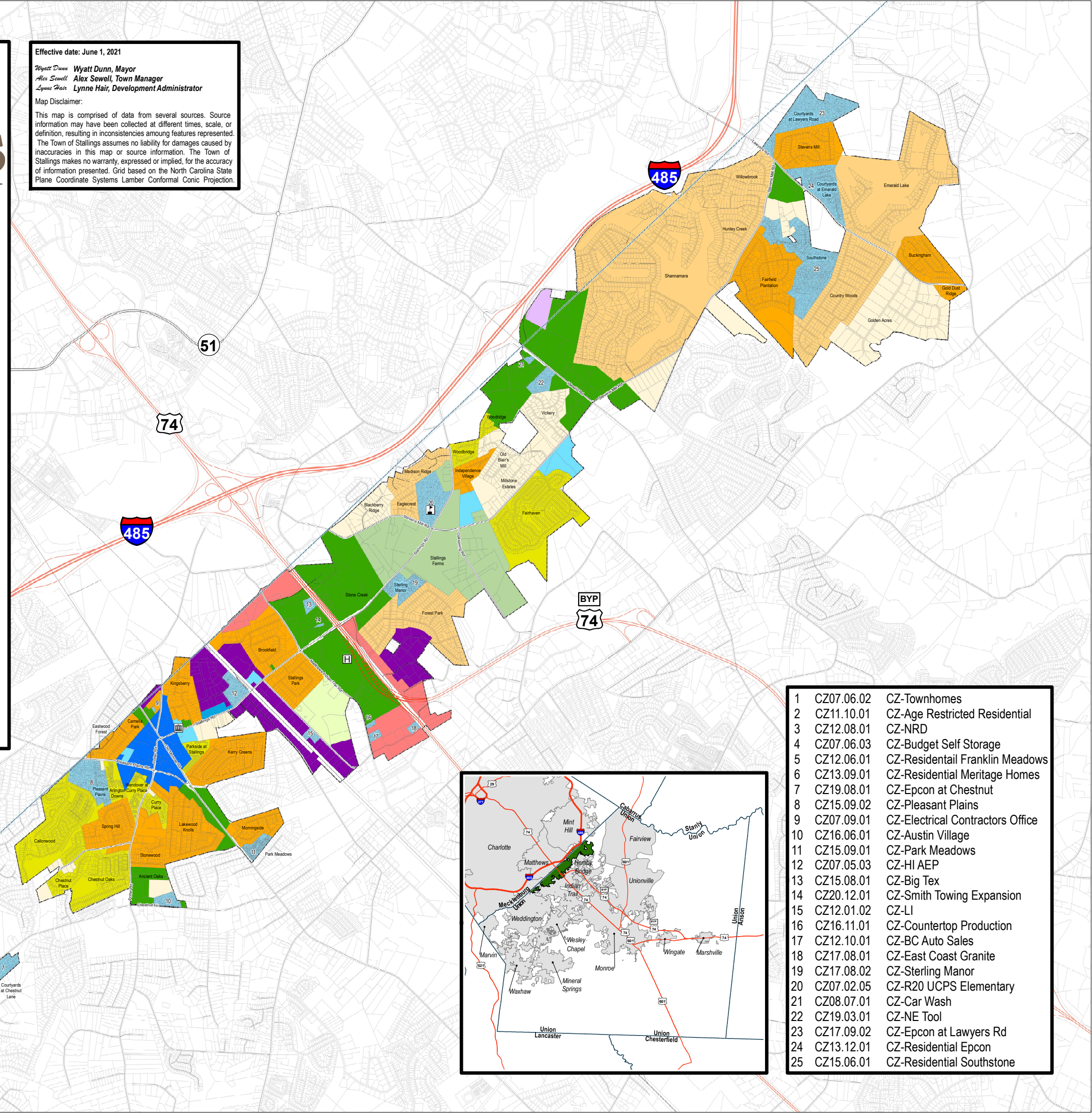
1:10,000

N

Effective date: June 1, 2021

Wyatt Dunn **Wyatt Dunn, Mayor**
Alex Sewell **Alex Sewell, Town Manager**
Lynne Hair **Lynne Hair, Development Administrator**

Map Disclaimer:
This map is comprised of data from several sources. Source information may have been collected at different times, scale, or definition, resulting in inconsistencies among features represented. The Town of Stallings assumes no liability for damages caused by inaccuracies in this map or source information. The Town of Stallings makes no warranty, expressed or implied, for the accuracy of information presented. Grid based on the North Carolina State Plane Coordinate Systems Lamber Conformal Conic Projection.



- | | | |
|----|------------|----------------------------------|
| 1 | CZ07.06.02 | CZ-Townhomes |
| 2 | CZ11.10.01 | CZ-Age Restricted Residential |
| 3 | CZ12.08.01 | CZ-NRD |
| 4 | CZ07.06.03 | CZ-Budget Self Storage |
| 5 | CZ12.06.01 | CZ-Residential Franklin Meadows |
| 6 | CZ13.09.01 | CZ-Residential Meritage Homes |
| 7 | CZ19.08.01 | CZ-Epcon at Chestnut |
| 8 | CZ15.09.02 | CZ-Pleasant Plains |
| 9 | CZ07.09.01 | CZ-Electrical Contractors Office |
| 10 | CZ16.06.01 | CZ-Austin Village |
| 11 | CZ15.09.01 | CZ-Park Meadows |
| 12 | CZ07.05.03 | CZ-HI AEP |
| 13 | CZ15.08.01 | CZ-Big Tex |
| 14 | CZ20.12.01 | CZ-Smith Towing Expansion |
| 15 | CZ12.01.02 | CZ-LI |
| 16 | CZ16.11.01 | CZ-Countertop Production |
| 17 | CZ12.10.01 | CZ-BC Auto Sales |
| 18 | CZ17.08.01 | CZ-East Coast Granite |
| 19 | CZ17.08.02 | CZ-Sterling Manor |
| 20 | CZ07.02.05 | CZ-R20 UCPS Elementary |
| 21 | CZ08.07.01 | CZ-Car Wash |
| 22 | CZ19.03.01 | CZ-NE Tool |
| 23 | CZ17.09.02 | CZ-Epcon at Lawyers Rd |
| 24 | CZ13.12.01 | CZ-Residential Epcon |
| 25 | CZ15.06.01 | CZ-Residential Southstone |