

Town of Stallings

Request for Proposals (RFP)

Sidewalk Repair Project – 350 Linear Feet

Informal Bid Solicitation

Issue Date: May 6, 2025

Bid Due Date: May 20, 2025

Project Location: Callonwood and Fairhaven Subdivisions, Stallings, NC

Project Description

The Town of Stallings is soliciting informal bids from qualified contractors for the repair and replacement of approximately 350 linear feet of concrete sidewalk. The new sidewalk shall be constructed in accordance with the City of Charlotte Land Development Standards Manual (CLDSM) Details 10.22 and 40.11 (attached as exhibits). The work includes removal of damaged sidewalk sections, installation of new sidewalk (4"-6" thick by 5' wide), and all necessary site preparation.

Scope of Work

- Sawcut and remove existing damaged concrete sidewalk.
- Grade and compact subgrade as necessary.
- Install 4-inch thick concrete sidewalk in non-driveway areas.
- Install 6-inch thick concrete sidewalk to bridge tree roots and in driveway crossings and high-load areas.
- Sidewalk over tree roots shall be reinforced with rebar.
- Sidewalk shall be 5 feet wide unless otherwise noted by the Town.
- All sidewalk shall meet ADA and detail specifications, including proper slope, finish, and joint spacing.
- Backfill and restore disturbed areas with seed and topsoil as directed.
- Ensure safe pedestrian detours or closures during construction.

Bid Items Table

Item No.	Description	Quantity	Unit	Unit Price	Total Price
1	Remove existing sidewalk	1750	SF		
2	5' wide rebar reinforced concrete sidewalk (CLDSM 40.11)	1750	SF		
3	Backfill/seeding and restoration	1	LS		
4	Traffic/pedestrian control during construction	1	LS		
Subtotal					
10% Contingency					
Total Bid					\$_____

Proposal Submission

Please submit your informal bid proposal via email to:

Kevin Parker

Engineering & Public Works Director

Town of Stallings

704-821-0309

Kparker@stallingsnc.org

AND

Justin Russell

Associate Engineer

Town of Stallings

704-821-0321

Jrussell@stallingsnc.org

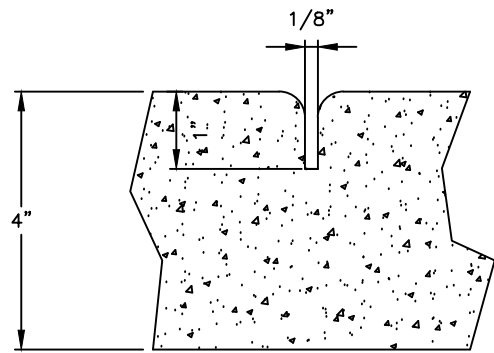
Proposals are due by May 20, 2025, at 5:00, p.m.. Late submissions may not be considered.

General Conditions

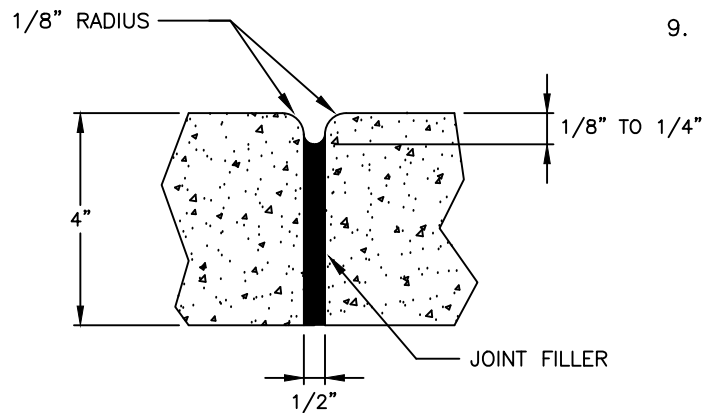
- The Town reserves the right to reject any or all bids.
- Contractor must submit proper North Carolina General Contractor license(s) and insurance with the bid submission.
 - o The Contractor shall maintain valid general liability insurance in the minimum amount of one million dollars (\$1,000,000.00), commercial automobile liability insurance in the minimum amount of one million dollars (\$1,000,000.00) and provide a certificate of such insurance naming the Town of Stallings as additional insured by endorsement to the policy. If the policy has a blanket additional insured provision, the contractor's insurance shall be primary and non-contributory to other insurance. Additionally, the contractor shall maintain and show proof of workers' compensation and employer's liability insurance. The Contractor shall provide notice of cancellation, non-renewal, or material

change in coverage to the Town of Stallings within 10 days of their receipt of notice from the insurance company.

- All work shall conform to Town of Stallings standards and applicable NCDOT specifications.
- Work must be completed and fully invoiced by June 20, 2025.
- The Town of Stallings may adjust the scope of work as needed.



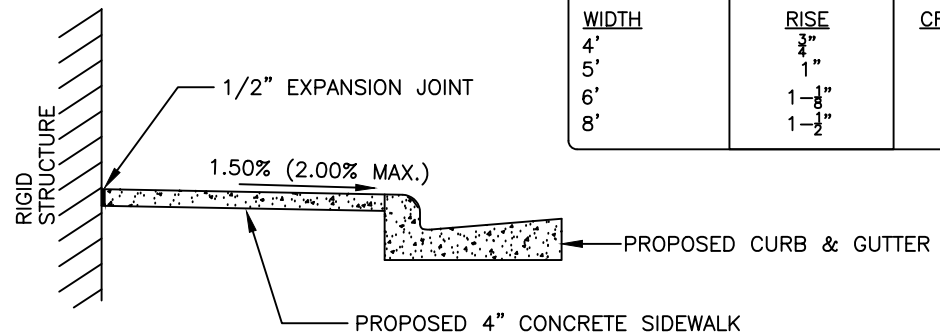
GROOVE JOINT IN SIDEWALK



TRANSVERSE EXPANSION
JOINT IN SIDEWALK

GENERAL NOTES:

1. A GROOVE JOINT 1" DEEP WITH 1/8" RADII SHALL BE REQUIRED IN THE CONCRETE SIDEWALK WITH JOINT SPACING EQUAL TO THE WIDTH OF SIDEWALK, UP TO 10' WIDTH. WIDER THAN 10' REQUIRES SPECIAL DESIGN (SEE DETAIL #10.42 FOR MULTI-USE PATH).
2. ONE 1/2" EXPANSION JOINT WILL BE REQUIRED AT INTERVALS OF NOT MORE THAN 45' AND MATCHING EXPANSION/CONSTRUCTION JOINT IN ADJACENT CURB. A SEALED 1/2" EXPANSION JOINT WILL BE REQUIRED WHERE THE SIDEWALK JOINS ANY RIGID STRUCTURE.
3. SIDEWALK AT DRIVEWAY ENTRANCES TO BE 6" THICK.
4. WIDTH OF SIDEWALK ON ARTERIALS SHALL BE BASED ON THE STREETS MAP TYPICAL SECTION. WIDTH OF SIDEWALKS ON UPTOWN STREETS WILL BE BASED ON TABLE 33-6 OF THE UDO.
5. WIDTH OF SIDEWALKS ON NON-ARTERIALS SHALL BE BASED ON TYPICAL SECTION, OR AS SHOWN ON THE STREETS MAP WHEN A SHARED USE PATH IS SHOWN. SIDEWALK/SUP OF REQUIRED WIDTH TO BE POURED TO END OF RADIUS AT INTERSECTING STREETS.
6. CONCRETE COMPRESSIVE STRENGTH SHALL BE 3600 PSI. IN 28 DAYS.
7. ZONING CONDITIONS MAY REQUIRE ADDITIONAL WIDTH SIDEWALKS WHICH SHALL SUPERSEDE THESE STANDARD DIMENSIONS SHOWN.
8. LIDS FOR JUNCTION BOXES AND UTILITY VAULTS SHALL BE NON-SKID AS SPECIFIED BY ENGINEER.
9. JOINT MATERIALS SHALL LIMIT SHRINK/SWELL SO POST CONSTRUCTION INSTALLATION RESULTS IN A MAXIMUM OF 1/4" FROM FLUSH.



DETAILS SHOWING EXPANSION JOINTS
IN CONCRETE SIDEWALK

EXAMPLE SIDEWALK CONSTRUCTION DIMENSIONS:

WIDTH	RISE	CROSS-SLOPE
4'	3/4"	1.56%
5'	1"	1.67%
6'	1-1/8"	1.56%
8'	1-1/2"	1.56%

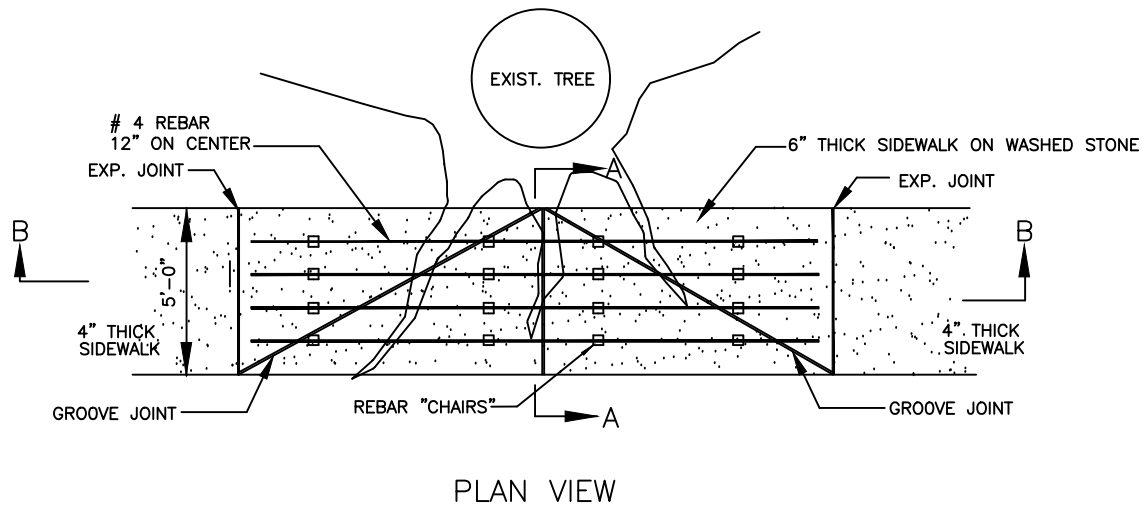
NOT TO SCALE



CITY OF CHARLOTTE
LAND DEVELOPMENT STANDARDS
INCLUDES CHARLOTTE ETJ

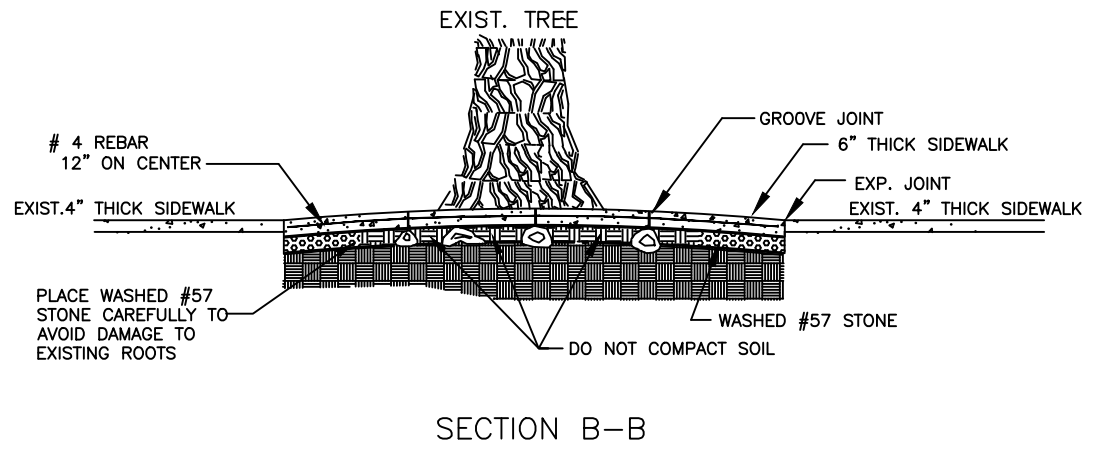
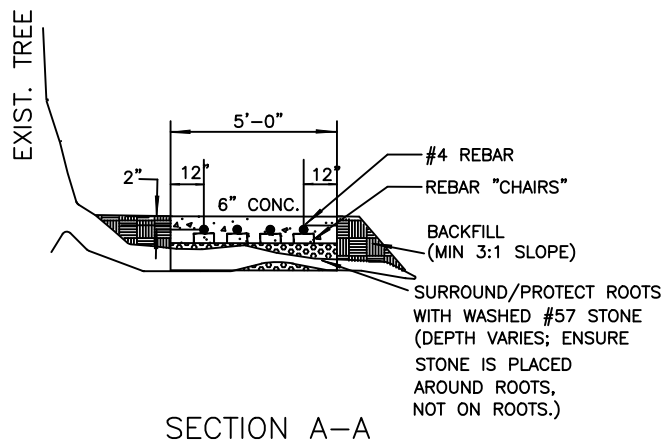
CONCRETE SIDEWALKS

STD. NO.	REV.
10.22	23



NOTES:

1. BRIDGING LENGTH IS A MINIMUM OF 1 LINEAR FOOT OF BRIDGING PER INCH OF DIAMETER AT BREAST HEIGHT (DBH). BASED ON FIELD CONDITIONS, MAY BE LONGER AS NEEDED.
2. NOT TO BE USED WHEN LESS THAN 4' WIDE PLANTING STRIP BETWEEN SIDEWALK AND BACK OF CURB.



CITY OF CHARLOTTE
LAND DEVELOPMENT STANDARDS
INCLUDES CHARLOTTE ETJ

REINFORCED CONCRETE SIDEWALK (BRIDGING TREE ROOTS)

STD. NO.	REV.
40.11	23