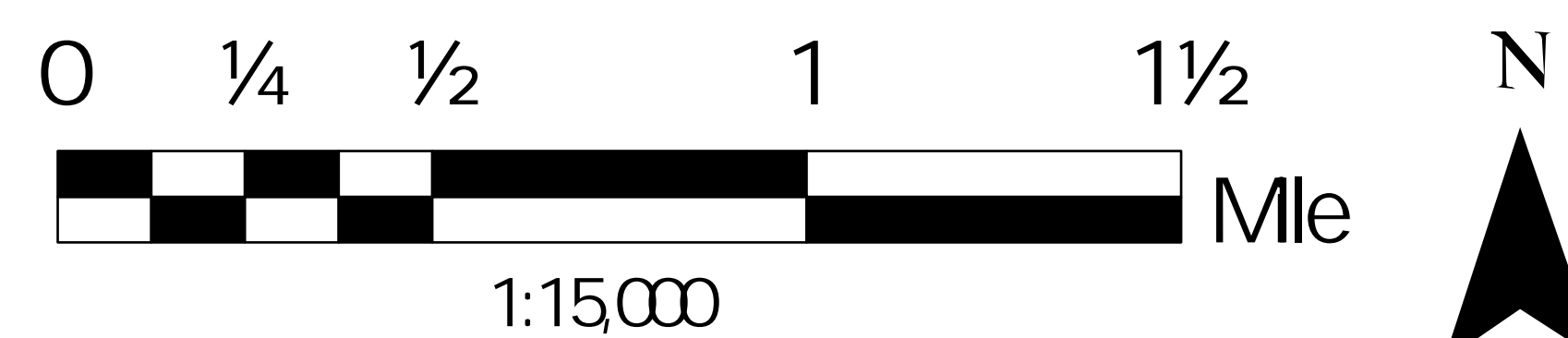




## Unified Development Ordinance Zoning Map

- h Town Hall
- h Stallings Elementary School
- O Atrium Hospital
- County Line
- Town of Stallings Limits
- AG Agriculture
- SFR-1 Residential
- SFR-2 Residential
- SFR-3 Residential
- MFT Multi-Family Transitional
- TC Town Center
- CIV Civic
- MU-1 Mixed Use
- MU-2 Mixed Use
- C-74 US Highway 74 Commercial
- CP-485 Highway 485 Corporate Park
- VSR Vehicle Service Repair
- IND Industrial
- CZ Conditional Zoning

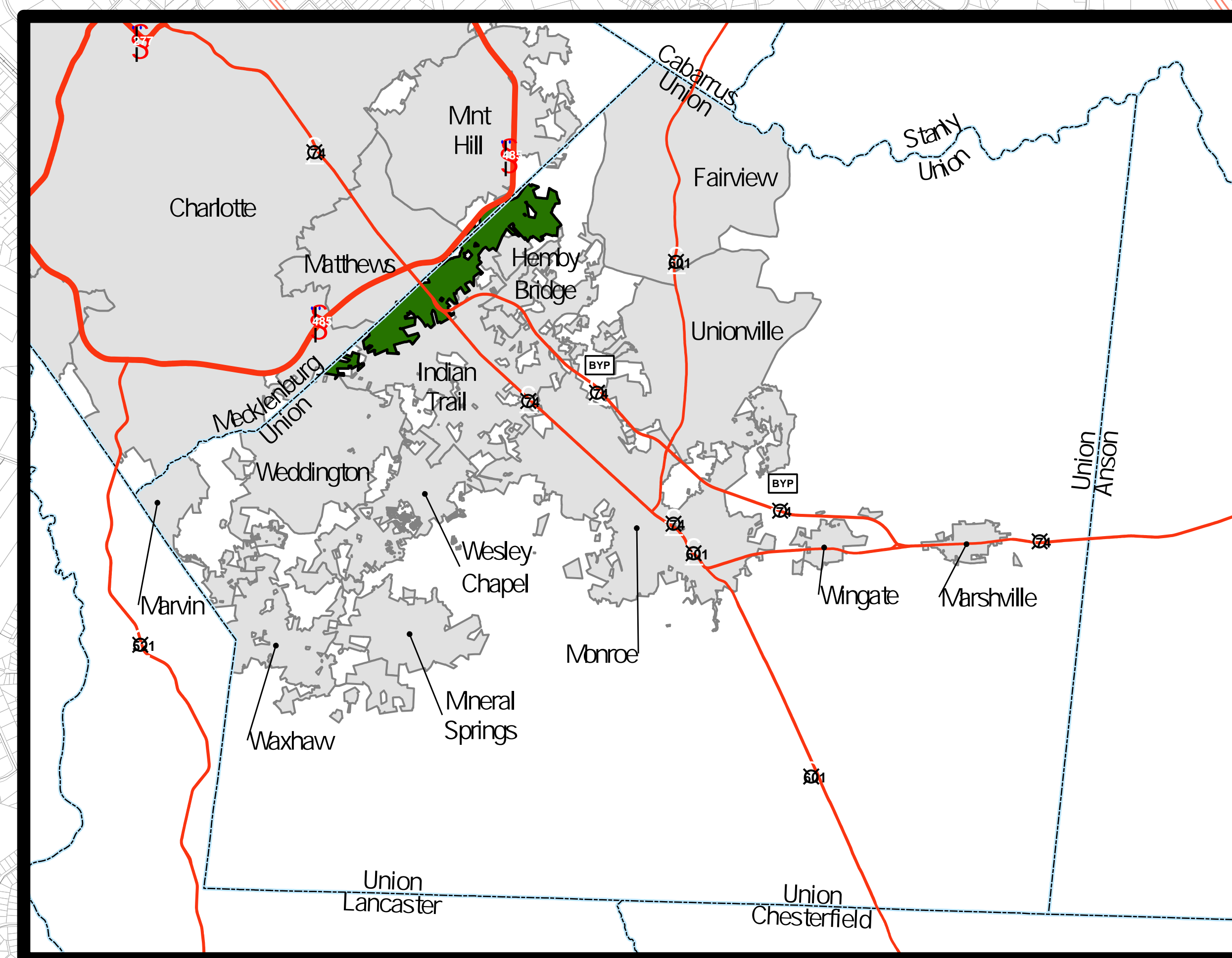
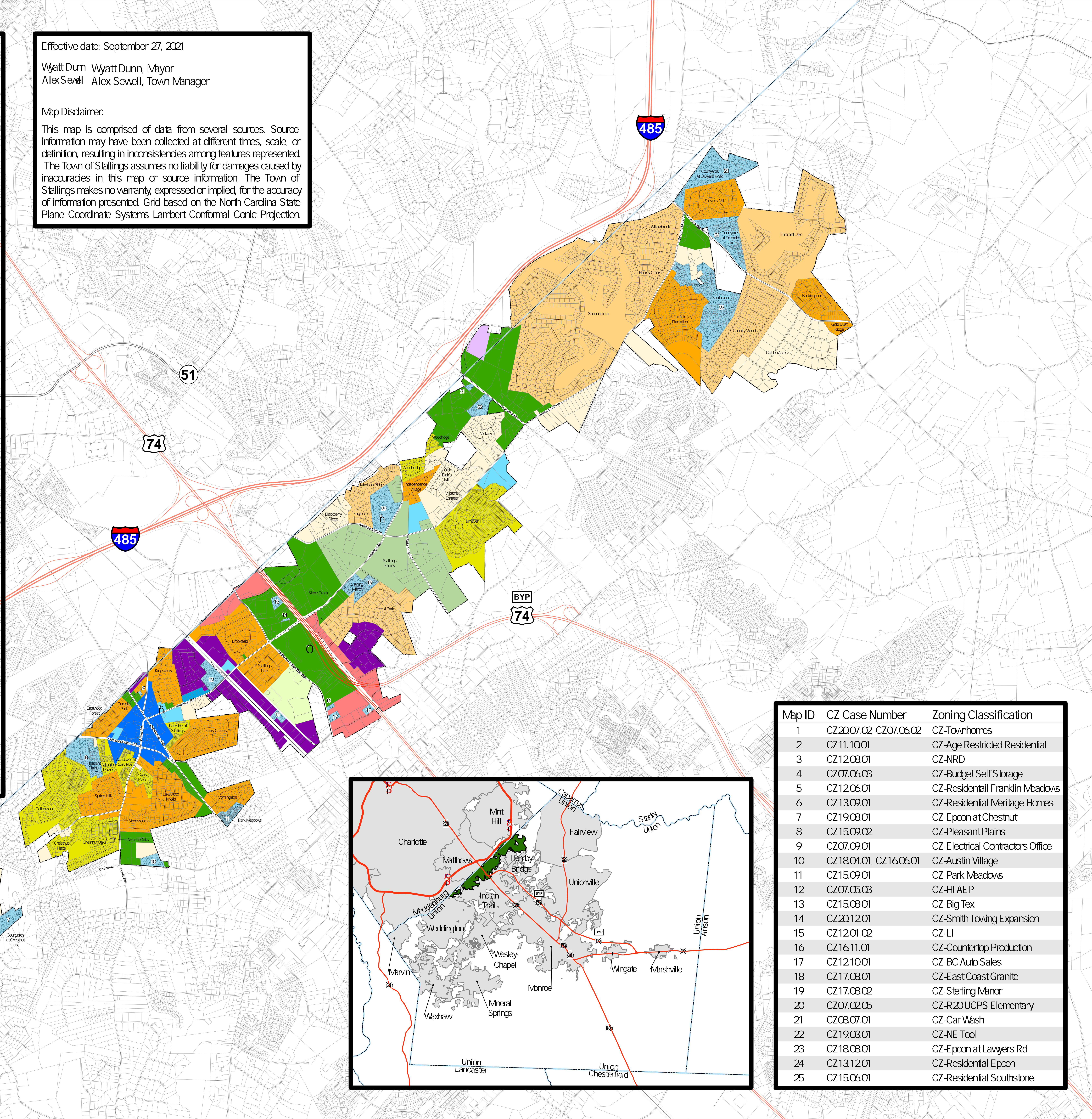


Effective date: September 27, 2021

Wyatt Dum Wyatt Dunn, Mayor  
Alex Sewell Alex Sewell, Town Manager

### Map Disclaimer:

This map is comprised of data from several sources. Source information may have been collected at different times, scale, or definition, resulting in inconsistencies among features represented. The Town of Stallings assumes no liability for damages caused by inaccuracies in this map or source information. The Town of Stallings makes no warranty, expressed or implied, for the accuracy of information presented. Grid based on the North Carolina State Plane Coordinate Systems Lambert Conformal Conic Projection.



Map ID	CZ Case Number	Zoning Classification
1	CZ20.07.02 CZ07.06.02	CZ-Townhomes
2	CZ11.10.01	CZ-Age Restricted Residential
3	CZ12.08.01	CZ-NRD
4	CZ07.06.03	CZ-Budget Self Storage
5	CZ12.06.01	CZ-Residential Franklin Meadows
6	CZ13.09.01	CZ-Residential Meritage Homes
7	CZ19.08.01	CZ-Epoon at Chestnut
8	CZ15.09.02	CZ-Pleasant Plains
9	CZ07.09.01	CZ-Electrical Contractors Office
10	CZ18.04.01, CZ16.06.01	CZ-Austin Village
11	CZ15.09.01	CZ-Park Meadows
12	CZ07.05.03	CZ-HI AEP
13	CZ15.08.01	CZ-Big Tex
14	CZ20.12.01	CZ-Smith Towing Expansion
15	CZ12.01.02	CZ-LI
16	CZ16.11.01	CZ-Countertop Production
17	CZ12.10.01	CZ-BC Auto Sales
18	CZ17.08.01	CZ-East Coast Granite
19	CZ17.08.02	CZ-Sterling Manor
20	CZ07.02.05	CZ-R20 UCPS Elementary
21	CZ08.07.01	CZ-Car Wash
22	CZ19.03.01	CZ-NE Tool
23	CZ18.08.01	CZ-Epoon at Lawyers Rd
24	CZ13.12.01	CZ-Residential Epoon
25	CZ15.06.01	CZ-Residential Southstone